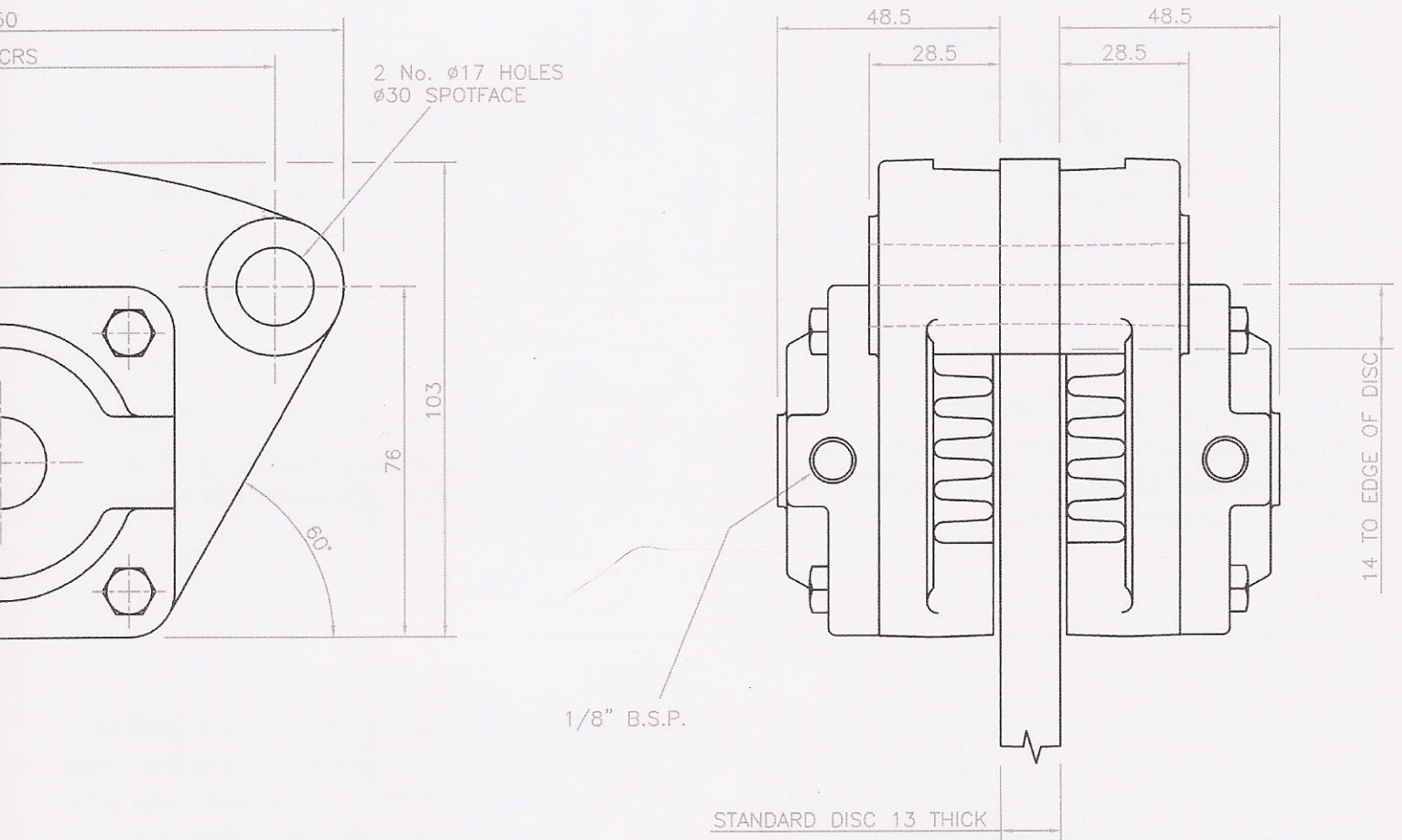




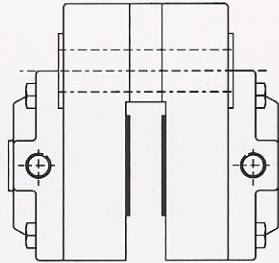
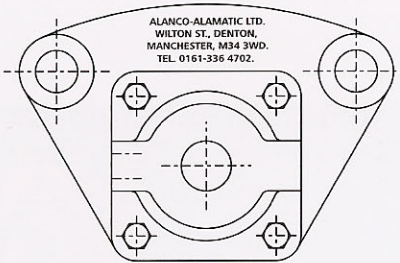
# Alanco-Alamatic Ltd.

Industrial Disc Brakes



## Product Guide

Industrial Disc Brakes, Safety Chucks and Tension Control Systems

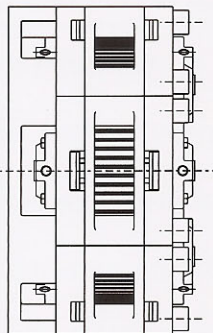
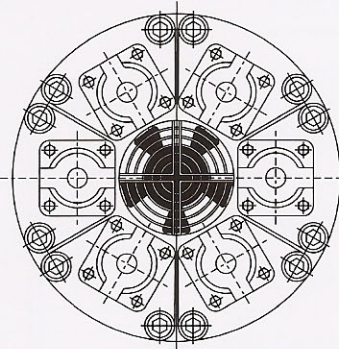
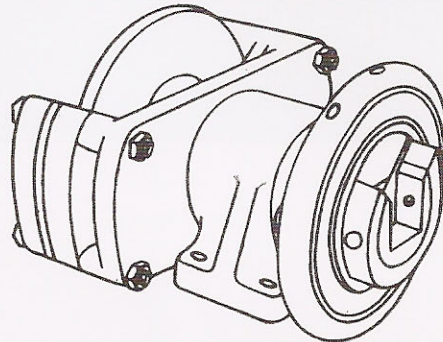


## AM TYPE INDUSTRIAL DISC BRAKES

Brake calipers available in four sizes to suit any size of disc.

## SAFETY CHUCKS

A convenient way to safely mount product reel bars for unwinding applications. Optional disc brake can be fitted to rear of chuck (as shown) On extended stub shaft.

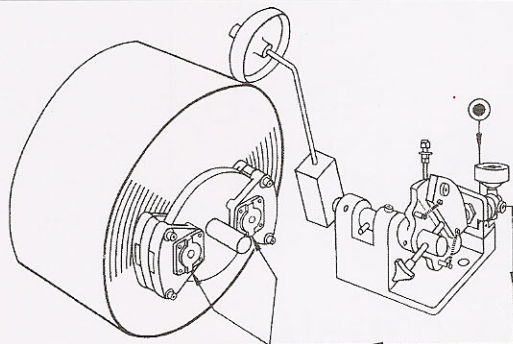
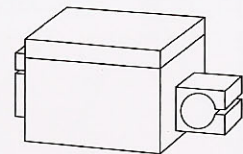
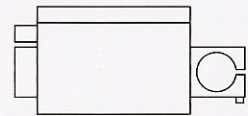
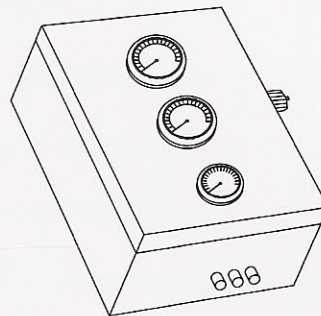


## DD TENSION BRAKE

Fully guarded multi-purpose air-cooled tension brake with up to eight calipers fitted to a ventilated SG iron disc, available in various sizes.

## PNEUFLO TENSION CONTROL SYSTEM

This all pneumatic tension controller is an economic and simplistic alternative to the electronic loadcell systems.

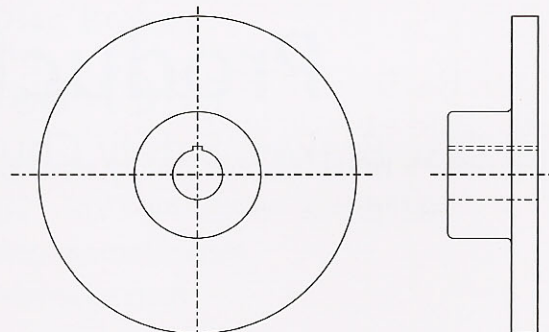


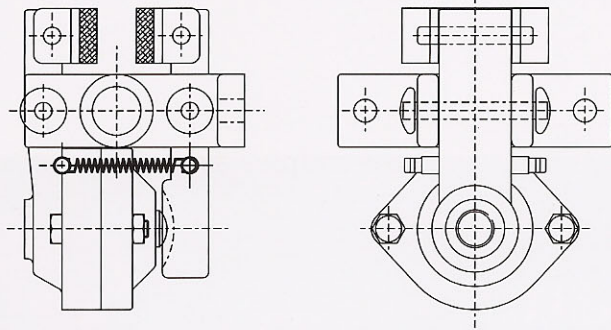
## PROPORTIONAL TENSION CONTROL

Low cost pneumatic control valve complete with arm, roller and cover box. Unit automatically regulates the air pressure in relation to the reel diameter.

## BRAKE DISCS

Available in any size, cast iron or steel, flat discs or with boss, solid or ventilated construction.

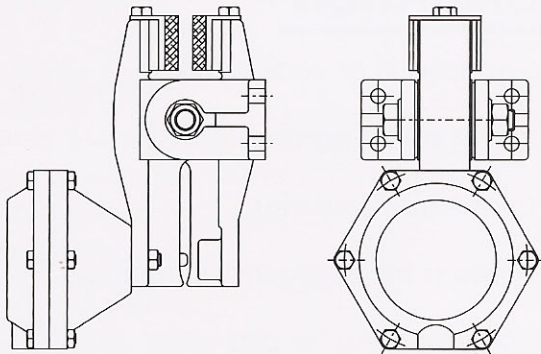
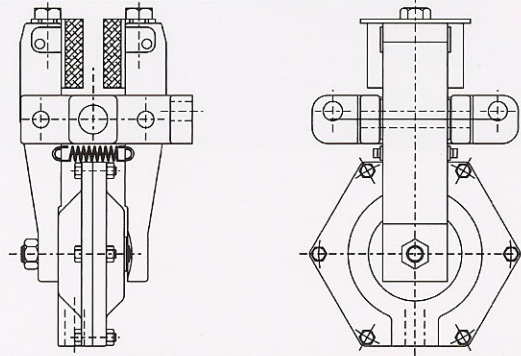




**ALA 1 DISC BRAKE**  
 Compact brake for discs 13mm thick,  
 from 125mm to 430mm diameter.  
 Two versions available to suit horizontal  
 or vertical mounting faces.

**ALA 2 & 5 DISC BRAKES**

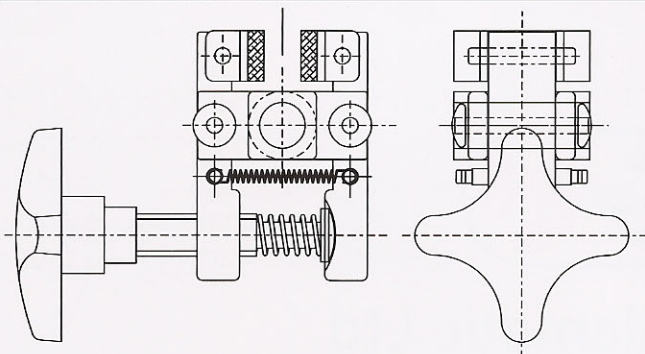
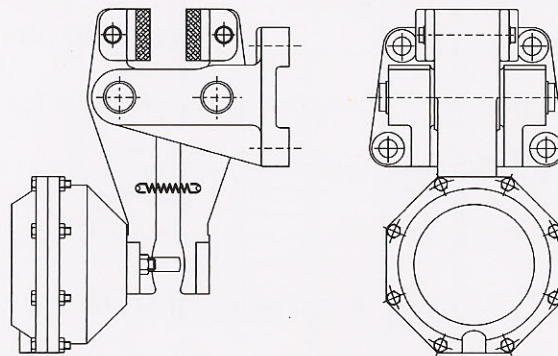
Larger version of the ALA 1 disc brake.  
 Designed to suit 13mm thick discs from  
 200mm to 430mm diameter. Horizontal  
 and vertical mounting available.



**SP 9, 12, 16 & 20 DISC BRAKES**  
 The original Alanco brake for 13mm or  
 25mm wide discs. (min. 200mm  
 diameter) Linings and diaphragms  
 interchangeable back to 1966.

**DP 24 & DP 36 DISC BRAKES**

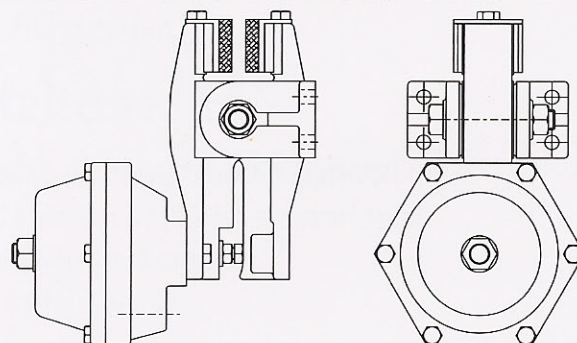
Large, heavy duty brakes to suit discs of  
 unlimited diameter, 25mm or 50mm thick.



**HANDWHEEL APPLIED BRAKES**  
 Used for tension applications when no air  
 is available, i.e. portable unwind stands.  
 Three manual brake sizes are available.

**'FAILSAFE' AIR HELD OFF/SPRING APPLIED**

For applications where brakes are activated  
 by spring when all services fail. All the above  
 SP & DP type brakes may be made 'Failsafe'.





# Alanco-Alamatic Ltd.

Industrial Disc Brakes

## GENERAL INFORMATION

All units available for mounting to horizontal or vertical faces.

Variable torque rating dependent on air pressure.

Available with handwheel for manual operation.

Failsafe brakes, spring applied and air released for emergency stopping.

All air and failsafe brakes are self compensating for pad wear.

No limit to disc size available.

Ventilated discs available for additional heat dissipation.

Range of 'Safety Chucks' for reel bar support and quick loading and unloading of product.

Automatic tension control systems.

A full range of spares for all brakes readily available.



## Alanco-Alamatic Ltd.

Industrial Disc Brakes

**Established 1966**

Wilton Street, Denton, Manchester M34 3WH, England  
Telephone +44 (0)161 336 4702 Fax +44 (0)161 335 0100  
e-mail: [info@alanco-alamatic.com](mailto:info@alanco-alamatic.com)  
[www.alanco-alamatic.com](http://www.alanco-alamatic.com)